



Repair Movies

- mechanical -



ELM
J10, J10i2



CONTENTS

1	Movies	3
1.1	Disassembly	3
1.2	Reassembly	3
2	Revision History	4

To view the embedded repair movies in this document, Acrobat Reader version 8 (or later) and Flash Player version 8 (or later) must be installed on your computer.

***For best picture quality, select “Actual size” or “100%” as zoom level in Acrobat Reader.
To magnify while keeping an acceptable picture quality, increase the zoom level to 200%.***

***If the movies appear to be jerky or blurred when viewing on-line, this is probably caused by the connection speed being too slow.
In that case, right-click with the mouse on the document name and select Save Target As to download the repair movie document for off-line viewing.***

***For general information about repair movies, refer to
1220-1333: Generic Repair Manual - mechanical***



1 Movies

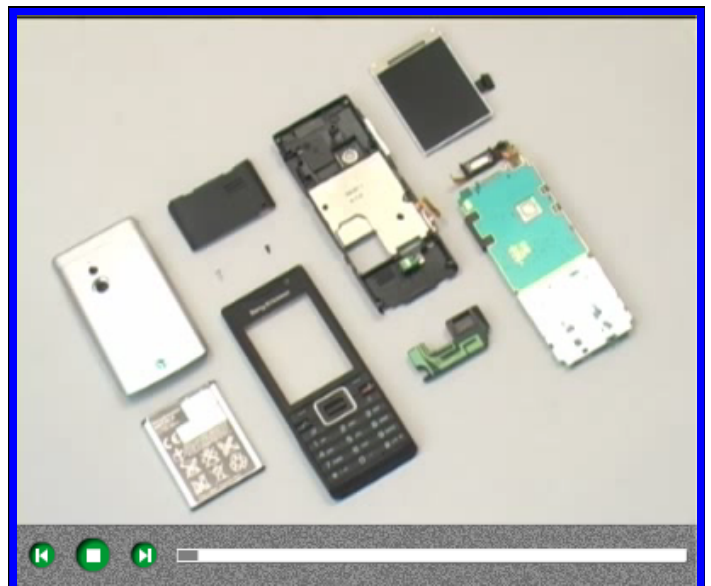
1.1 Disassembly

1. Battery Cover Assy
2. Battery
3. Antenna Cover
4. Screw Len: 4.5 Diam: 1.4
5. Screw Len: 3.25 Diam 1.4
6. Front Cover Assy
7. Carrier Assy
8. Loudspeaker
9. Display 2.2 TFT
- 10a. Carrier Frame Assy VT+Receiver & PBA (J10 only)
- 10b. Carrier Frame Assy Receiver & PBA (J10i2 only)



1.2 Reassembly

- 1a. Carrier Frame Receiver & PBA (J10i2 only)
- 1b. Carrier Frame VT+Receiver & PBA (J10 only)
2. Display 2.2 TFT
3. Loudspeaker
4. Carrier Assy
5. Front Cover Assy
6. Screw Len: 3.25 Diam 1.4
7. Screw Len: 4.5 Diam: 1.4
8. Antenna Cover
9. Battery
10. Battery Cover Assy





2 Revision History

Rev.	Date	Changes / Comments
1	2010-Mar-08	Initial release